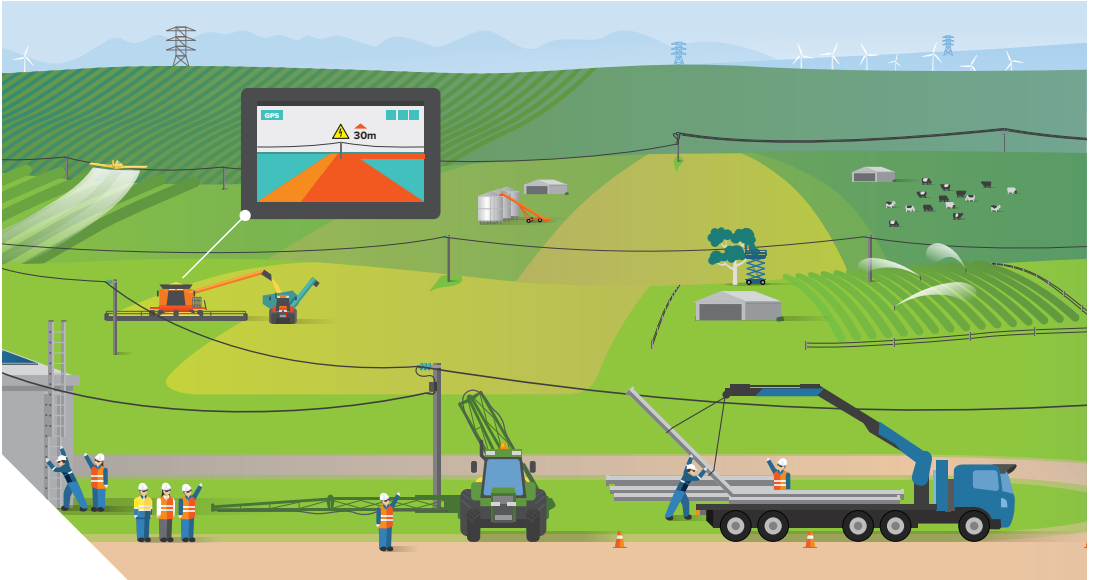


Always take care when working around overhead powerlines



Regularly remind everyone who lives or works on your farm of the location of powerlines.

If you are using **GPS-guided equipment**, make sure the location of electricity infrastructure on your property is programmed into the system.

If you're **crop dusting**, make sure you (or your contractor) identify where the powerlines are located before commencing the job.

Always check for powerlines whenever you **move or use farm machinery** like grain augers and harvesters, or when moving long or tall loads such as irrigation pipes.

Sheds, haystacks and silos and access to them should be located away from powerlines to minimise the risk of injury.

Water is a conductor of electricity so be careful when using water irrigation or water jets near powerlines.

**In an emergency call
SA Power Networks
on 13 13 66.**

For ambulance or police assistance call 000.



Call 13 13 66

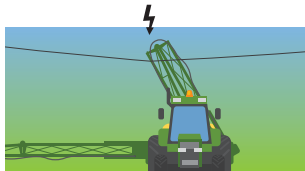
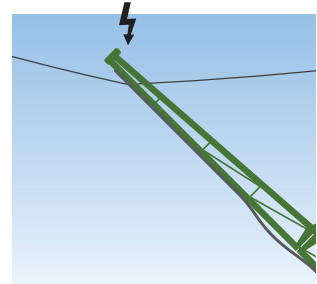
What to do if you contact a powerline



When an object or vehicle comes into contact with powerlines there is a high risk of electric shock. If this happens, you should:

- immediately contact SA Power Networks on **13 13 66** and
- **do not move** until the power is switched off.

If a vehicle strikes a powerline, it may be necessary for everyone to evacuate the vehicle to prevent injury.



Several steps must be followed to maximise your safety, including:



Jump out and clear of the vehicle, ensuring you do not touch the vehicle and ground at the same time.



Calmly walk away using small, shuffling steps.



Call SA Power Networks immediately on **13 13 66**.



Do not return to the vehicle until after the area has been made safe. Keep other people well clear.



If you remain in your vehicle, others in the vicinity should keep well clear of you or the vehicle until SA Power Networks staff have made the line safe.

In an emergency call SA Power Networks on 13 13 66.

For ambulance or police assistance call 000.



Call 13 13 66